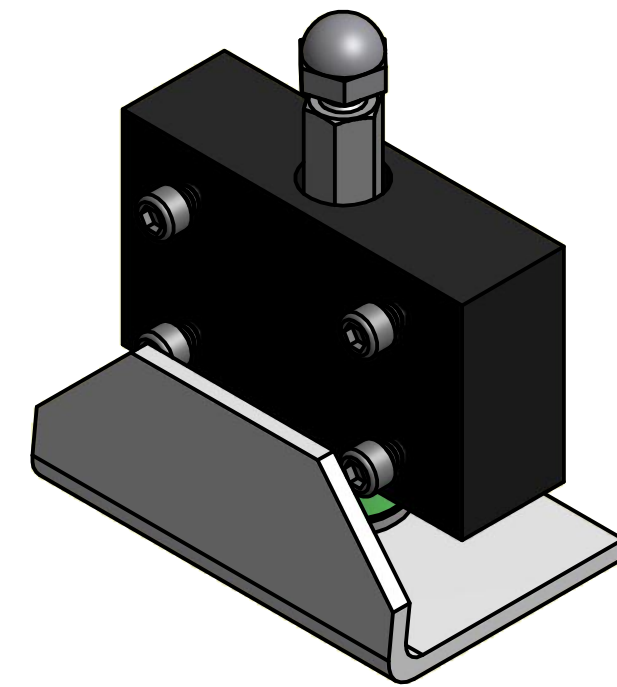
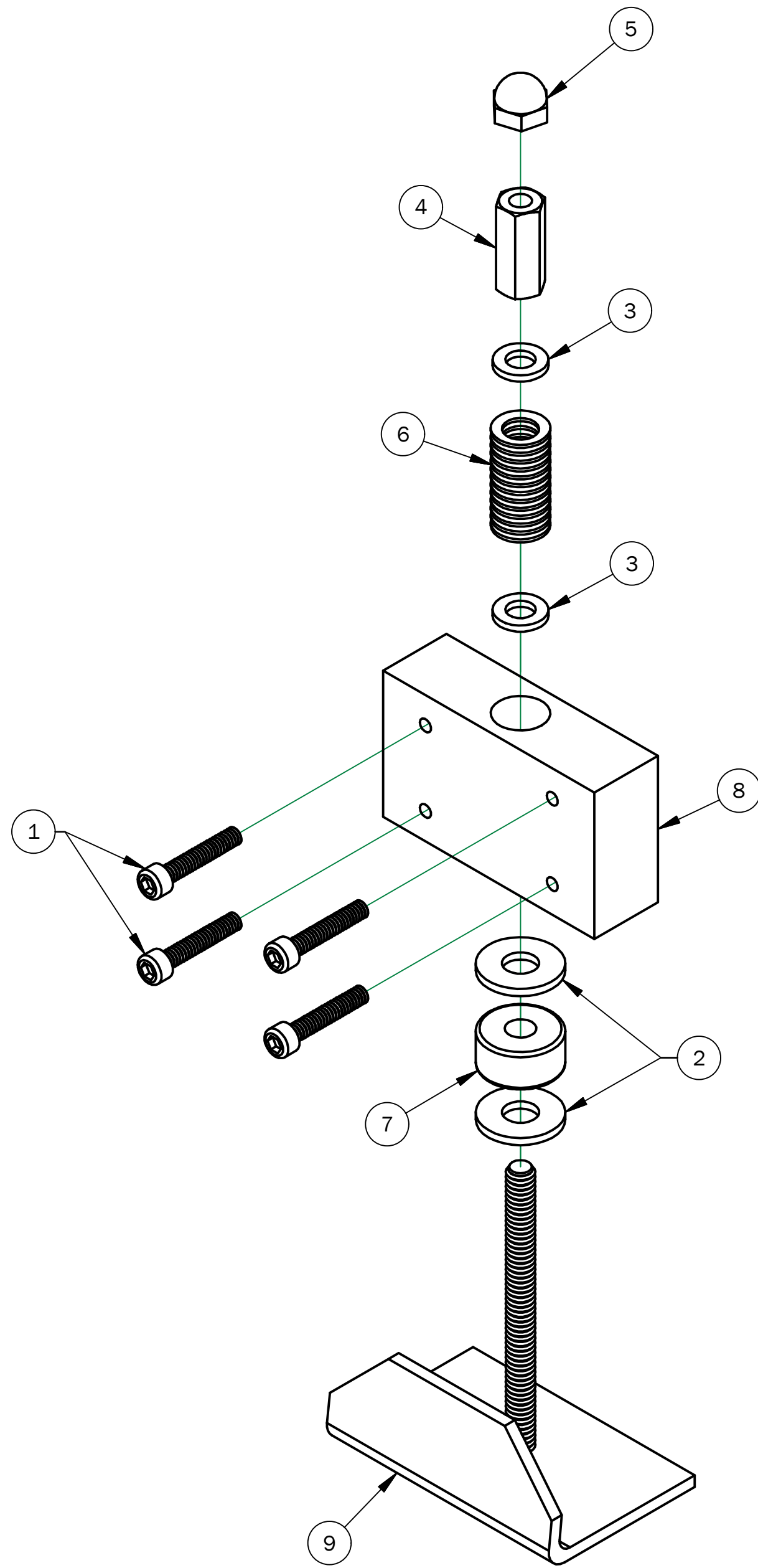


REVISION HISTORY				
REV	ECN NO.	DATE	BY	DESCRIPTION
0	-	10/17/2005	WAGNER	INITIAL RELEASE
1	2592	7/29/2010	TMM	1909-036 WAS 5807-099, ADDED 1905-038 & 1911-063



9	1	5807-095	LATCH, PLATE WELD-ASS'Y
8	1	5807-094	BLOCK, MAGNET - F.C./ARM
7	1	5807-088	SPACER, LATCH PLATE, MAGNET
6	1	2170-025	Spring, Compression, SS, .360 OD X .032 WD, 1 3/8 FL
5	1	1911-063	NUT, ACORN, 1/4-20, SS
4	1	1911-044	NUT, COUPLING, SS, 1/4-20 X 7/8
3	2	1909-036	WASHER, FLAT, SS, 0.255 ID, 0.468 OD, 0.063 THK
2	2	1909-001	WASHER, FLAT, SS, 5/16
1	4	1905-038	SCR, CAP, SOCKET, HD, BLACK, 8-32 X 7/8 LG
ITEM	QTY	PART NO.	DESCRIPTION

Parts List

ALL DIMENSIONS IN INCHES EXCEPT WHERE NOTED STANDARD TOLERANCES EXCEPT WHERE NOTED (ALL PLUS/MINUS) 2 PLC. DECIMAL: .010 3 PLC. DECIMAL: .005 FRACTION: 1/32 ANGLE: 1'	DWG BY: WagnerD DATE: 10/17/2005		HEAT SEAL/AMPAK CLEVELAND, OHIO 44125	
	CHK'D BY: DATE:			
	USED ON: VARIOUS		DESCRIPTION: Latch Plate Assembly, Left and Right	
	SHEET SIZE: C	SHEET: 1 OF: 1	DRAWING NO. 5807-098	REVISION: 1
PART FILE NAME: C:_Vault Working Folder\Heat Seal Vault\Products\Industrial\L-Sealers\HS-1520\5807-098.iam				