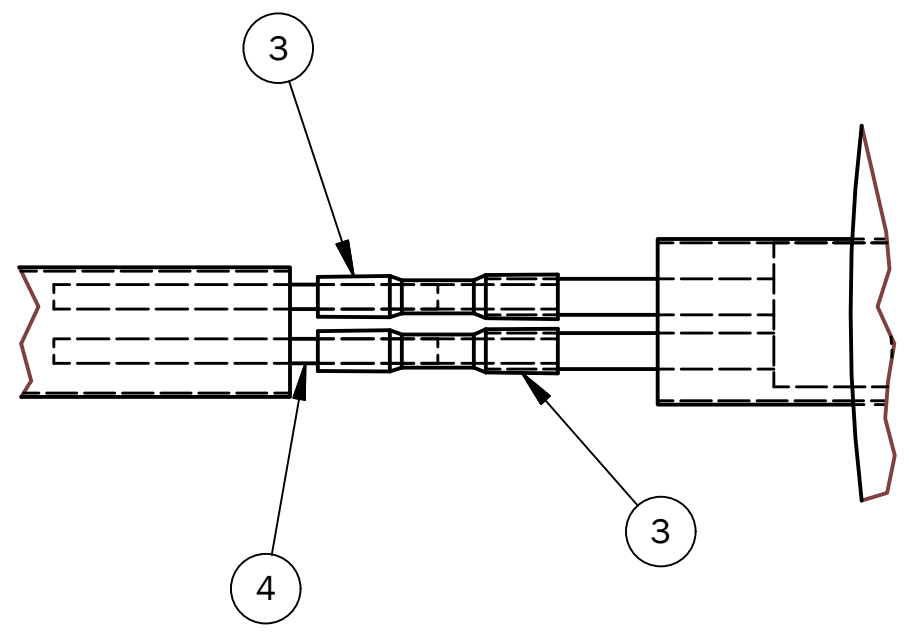
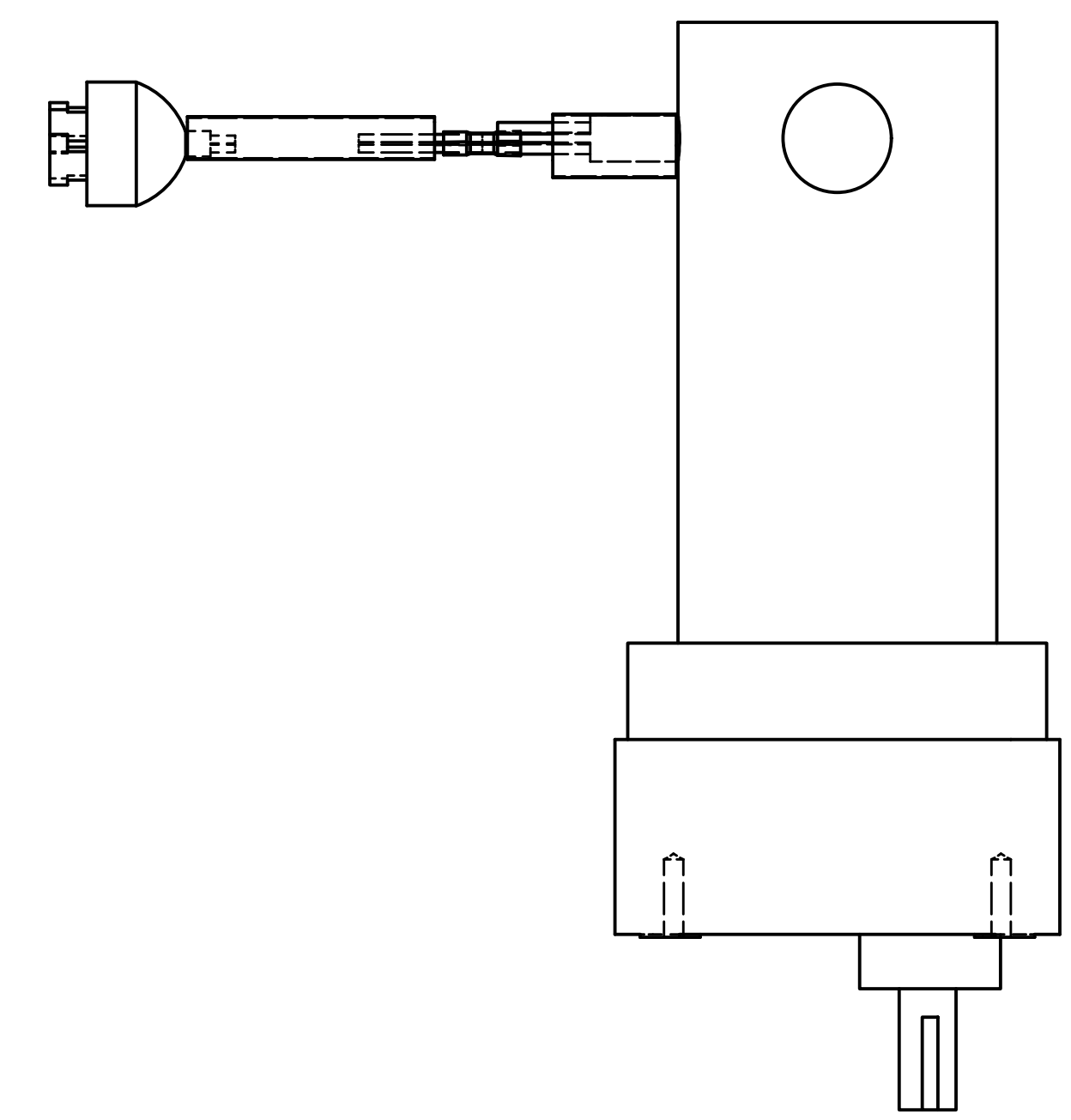
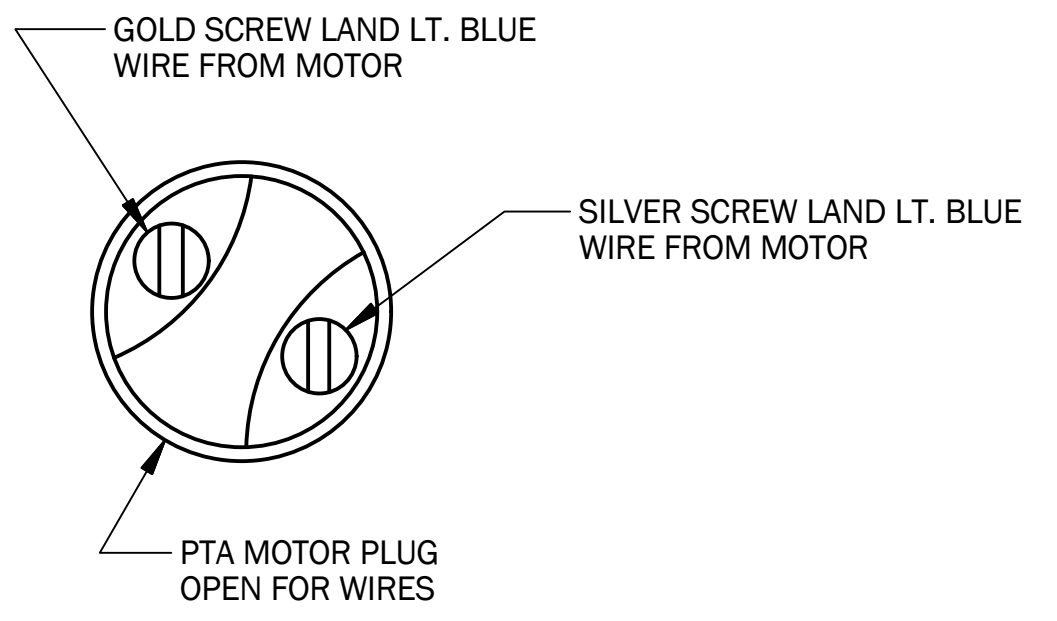
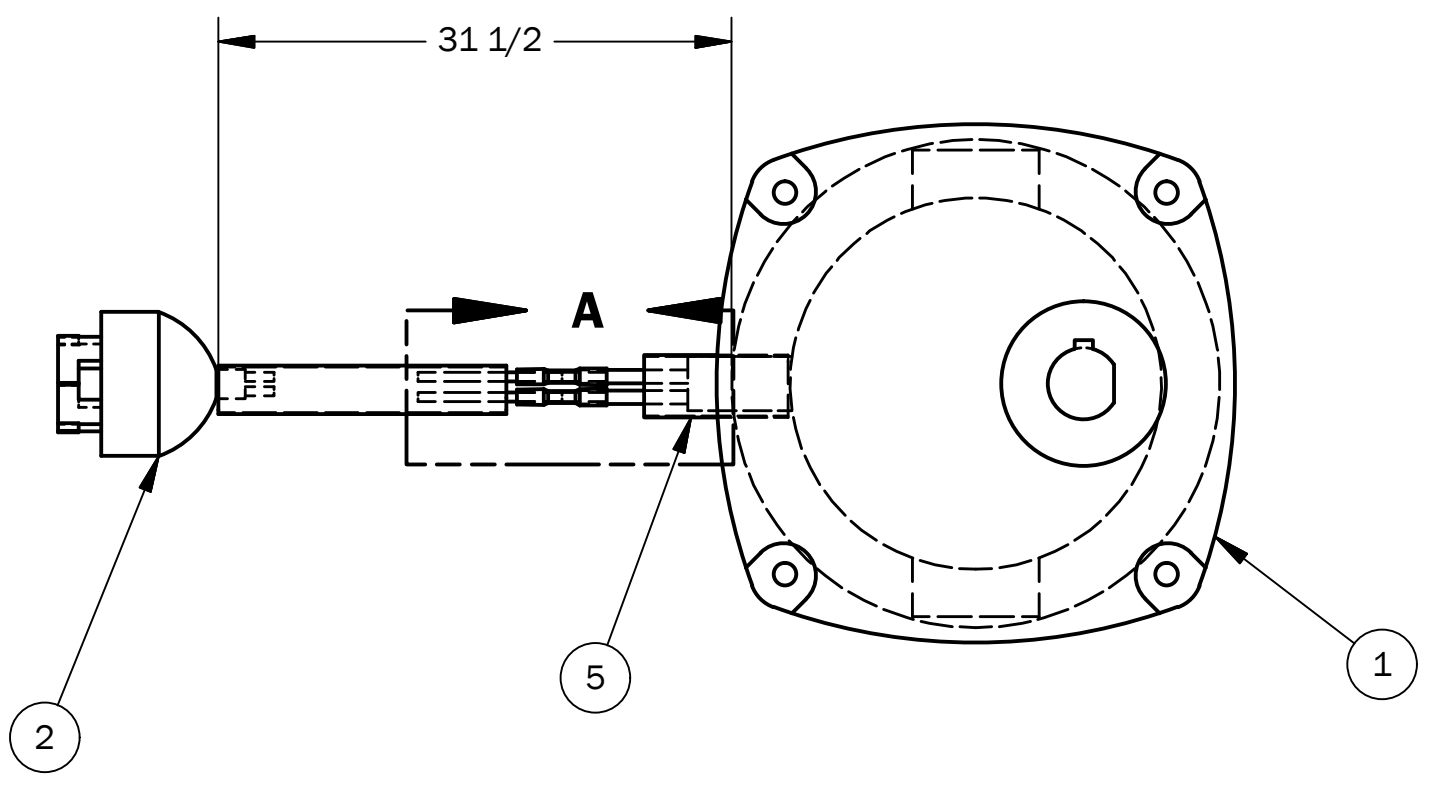


4 3 2 1

D
C
B
A



DETAIL A
CONNECT BLUE WIRES TO RED AND BLACK MOTOR WIRES
TO MAKE OVERALL LENGTH 31.5".
CUT GREEN WIRE
COVER CONNECTIONS AND BLUE WIRES WITH HEAT SHRINK



THIS ASSEMBLY IS USED ON:

- HS-1730
- HS-2024
- HS-3040
- HDS-2020
- HDS-2024
- HDS-2030

ITEM	QTY	PART NO.	DESCRIPTION
6	1	2205-002	SLEEVING, BLACK, #3, .234 ID (31 LG.)
5	1	2201-002	TUBING, SHRINK, .375 ID (1 IN.)
4	2	1890-044	WIRE, LT. BLUE, 14 AWG, THWN/MTW (19.5 IN.)
3	2	1878-021	CONNECTOR, BUTT, NON-INSUL, 16/14
2	1	1845-029	MOTOR PLUG, 90VDC
1	1	1839-070	GEARMOTOR, 1/20 HP, 90VDC, 49 RPM, 55 IN.LB

PARTS LIST

ALL DIMENSIONS IN INCHES EXCEPT WHERE NOTED STANDARD TOLERANCES EXCEPT WHERE NOTED (ALL PLUS/MINUS) 2 PLC. DECIMAL: .010 3 PLC. DECIMAL: .005 FRACTION: 1/32 ANGLE: 1'	DWG BY: TLB DATE: 6/5/2006		HEAT SEAL/AMPAK CLEVELAND, OHIO 44125	
	CHK'D BY: DATE:			
	USED ON: HDS-115		DESCRIPTION: MOTOR ASSY, PTA CONVEYOR, 1/20 HP	
SHEET SIZE: C		SHEET: 1 OF: 1	DRAWING NO. 5818-635	REVISION: 0
PART FILE NAME: C:_Vault Working Folder\Heat Seal Vault\Products\Industrial\Combo Systems\HDS-115\Electric Dwg\5818-635.iam				

4 3 2 1