

11 18 19
TYP ALL ROLLERS

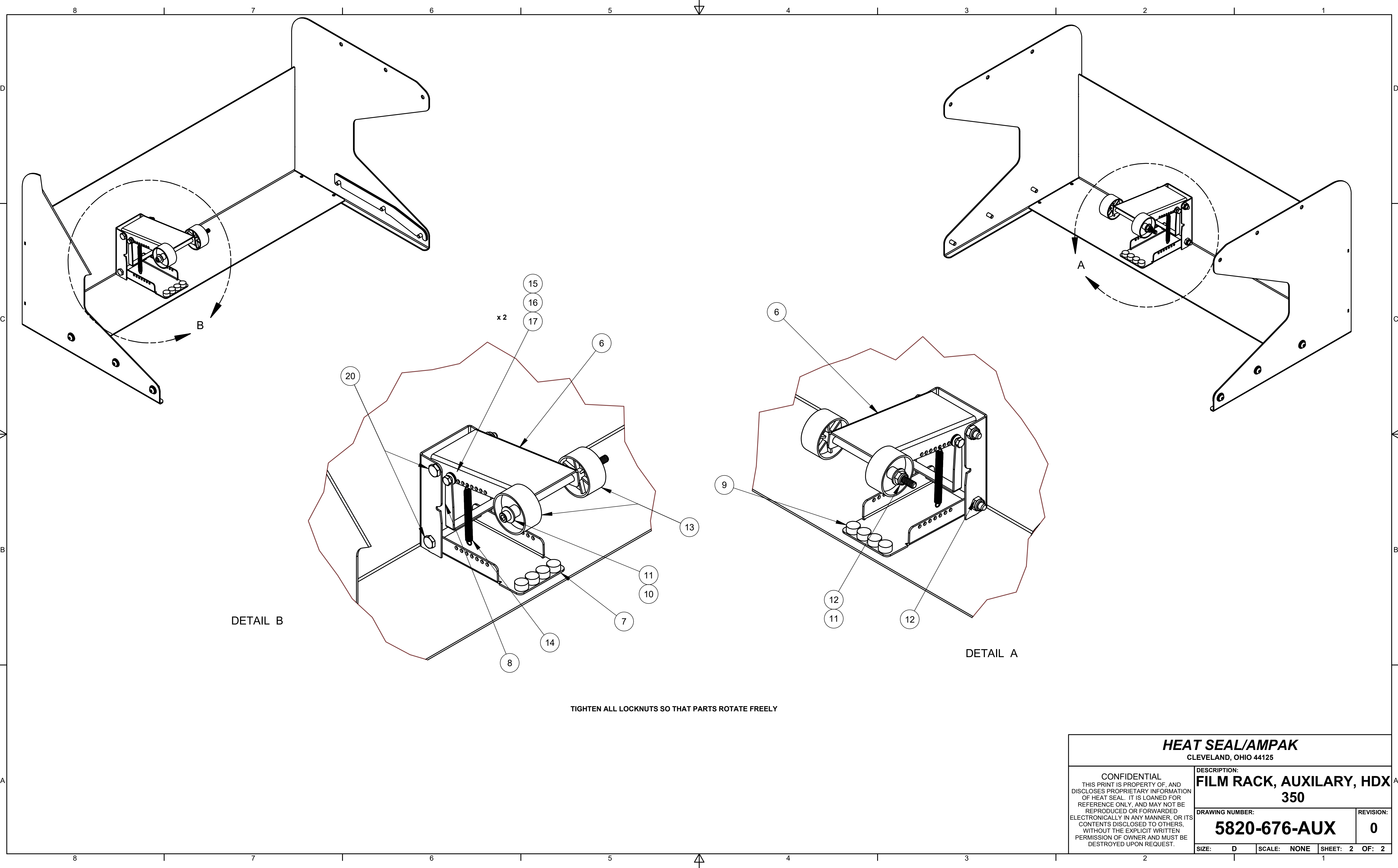
ITEM	QTY	PART NUMBER	DESCRIPTION
20	2	1903-799	SCR, CAP, HEX HD, SS, 1/4-20 X 3 LG
19	6	1903-169	SCR, CAP, BUTTON HD, SOCKET 1/4-20 X 5/8 LG, SS
18	6	1907-001	LOCKWASHER, SPLIT, 1/4 MED, SS
17	2	1911-027	Locknut, Nylon Insert, 10-32
16	2	1903-758	SCR, MACH, HEX HD, SS, 10-32 x 0.5" LG
15	4	1909-022	WASHER, FLAT, SS, #8 (3/16 ID X 7/16 OD)
14	2	2170-069	SPRING, EXTENSION, SS, 0.25 OD, 2.5 LG, 0.029 WIRE
13	2	2115-031	WHEEL, SKATE, ABS, 1-5/8 OD, 1/4" BORE
12	3	1911-021	NUT, HEX, NYLOCK 1/4-20, SS
11	8	1909-002	WASHER, FLAT, SS, 5/8 OD X 1/4 ID X .065 THK
10	1	1903-761	SCREW, CAP, SOC HD, SS, 1/4-20 x 5" LG
9	4	0910-021	BUMPER, RUBBER, 1/2 OD, 1/4 H, 1/4 STEM
8	1	5820-398	LOCKING BAR, BRAKE LEVER
7	1	5820-397	BOTTOM BRAKE LEVER, FILM RACK
6	1	5820-396	TOP BRAKE LEVER, FILM RACK
5	3	5820-684	SHAFT, FILM ROLLER, 5/16, HDX-350
4	1	5820-680	ROLLER ASSEMBLY, FILM, HDX-350
3	2	5820-678	FILM SUPPORT ROLLER ASSEMBLY, HDX-350
2	2	5820-383-AUX-1	SHIM, AUX FILM RACK, 14GA
1	1	5820-677-AUX	AUX FILM RACK BASE, HDX350

Material Specification
HEAT SEAL/AMPAK
CLEVELAND, OHIO 44125

CONFIDENTIAL
THIS PRINT IS PROPERTY OF, AND DISCLOSES PROPRIETARY INFORMATION OF HEAT SEAL. IT IS LOANED FOR REFERENCE ONLY, AND MAY NOT BE REPRODUCED OR FORWARDED ELECTRONICALLY IN ANY MANNER, OR ITS CONTENTS DISCLOSED TO OTHERS, WITHOUT THE EXPLICIT WRITTEN PERMISSION OF OWNER AND MUST BE DESTROYED UPON REQUEST.

UNLESS OTHERWISE SPECIFIED:	CREATED: 7/29/2022
ALL DIMENSIONS IN INCHES	CREATED BY: MAbbott
STANDARD TOLERANCES:	CHECKED:
0.00: ± .010	CHECKED BY:
0.000: ± .005	
ANGLE: ± 1'	

DESCRIPTION: FILM RACK, AUXILIARY, HDX 350	
DRAWING NUMBER: 5820-676-AUX	REVISION: 0
SIZE: D	SCALE: NONE
SHEET: 1	OF: 2



DETAIL B

DETAIL A

TIGHTEN ALL LOCKNUTS SO THAT PARTS ROTATE FREELY

HEAT SEAL/AMPAK CLEVELAND, OHIO 44125			
CONFIDENTIAL THIS PRINT IS PROPERTY OF, AND DISCLOSES PROPRIETARY INFORMATION OF HEAT SEAL. IT IS LOANED FOR REFERENCE ONLY, AND MAY NOT BE REPRODUCED OR FORWARDED ELECTRONICALLY IN ANY MANNER, OR ITS CONTENTS DISCLOSED TO OTHERS, WITHOUT THE EXPLICIT WRITTEN PERMISSION OF OWNER AND MUST BE DESTROYED UPON REQUEST.	DESCRIPTION: FILM RACK, AUXILARY, HDX 350		REVISION: 0
	DRAWING NUMBER: 5820-676-AUX		SHEET: 2 OF: 2
	SIZE: D	SCALE: NONE	