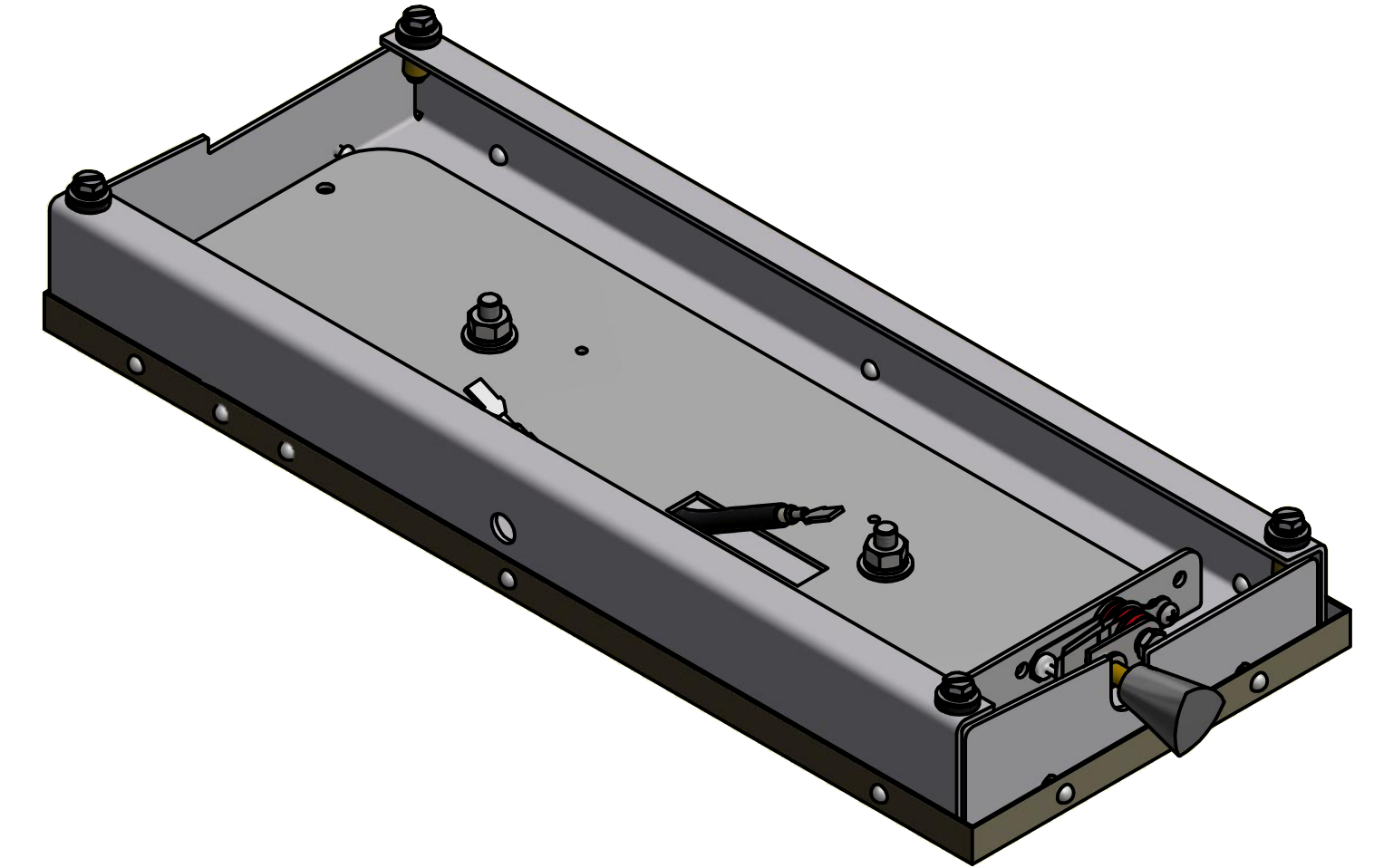
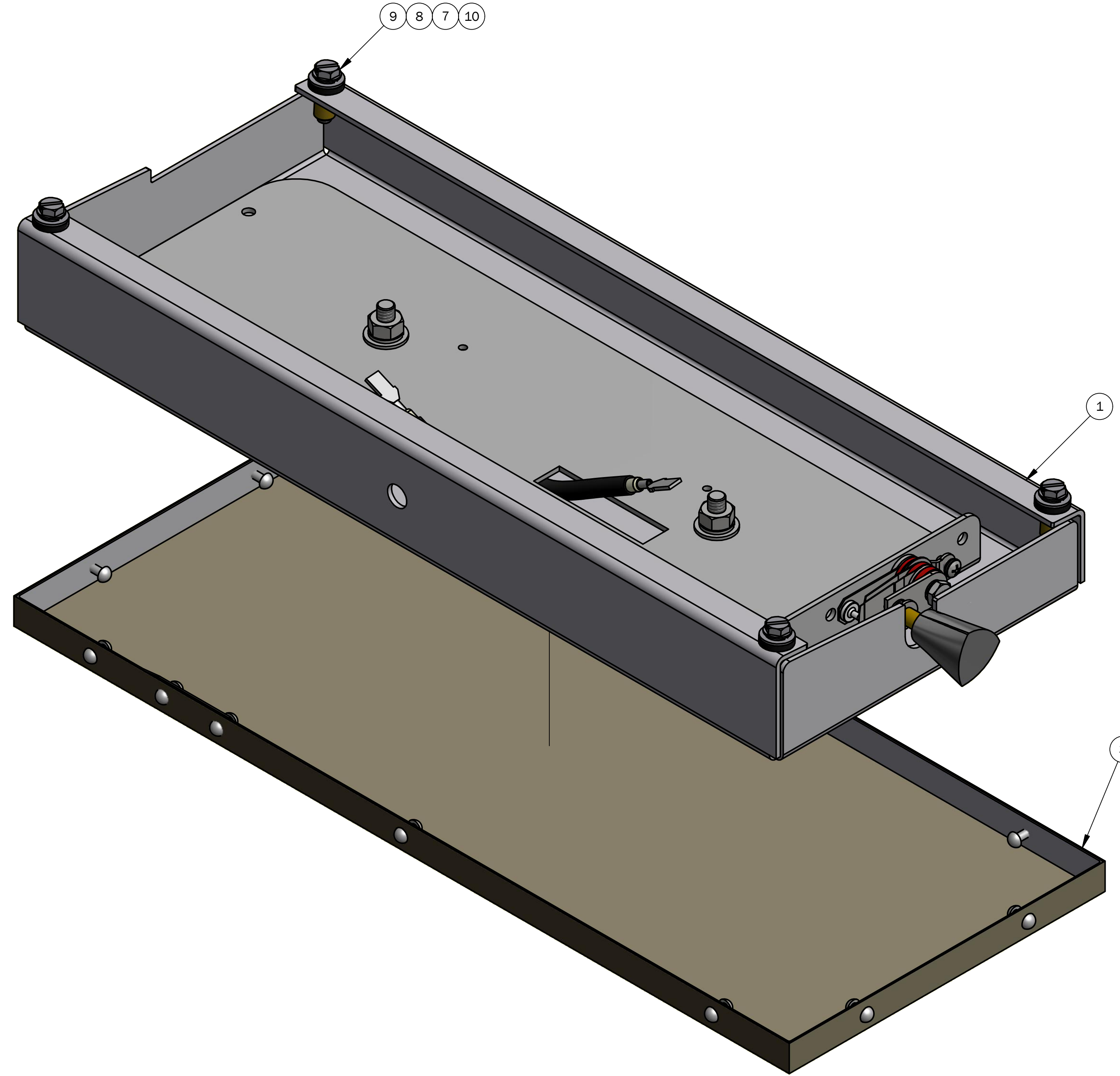


REVISION HISTORY				
REV	ECN NO.	DATE	BY	DESCRIPTION
1	1345	11/18/2005	BMC	REDRAWN TO INVENTOR
2	2240	12/1/2008	TMM	2145-023 WAS 2145-005, 6305-076 WAS 6305-015, 6305-080 WAS 6106-048
3	2364	6/10/2009	TMM	ADDED 1903-188, 1903-651 & 1909-019, 1907-005 QTY WAS 2
4	3003	9/30/2014	JPR	1903-109 WAS 1903-730
5	3684	7/27/2017	EMT	6107-147 WAS 6305-076
6	4114	7/29/2020	PG	ADDED PRODUCTION NOTE FOR TESTING, ADDED 1909-004, 1907-001 REMOVED ALL HOT PLATE ASSEMBLY PARTS, REMOVED 1903-651, ADDED 6305-086, 1833-002, 3310-024, 3360-027, 2150-232, 6110-040, AND ADDED PRODUCTION NOTES
7	4250	5/25/2021	PG	



ITEM	QTY	PART NO.	DESCRIPTION
10	4	1833-002	Insulator, Washer - Fiber 1/2 OD, 1/4 ID, 3/32 T
9	4	1903-188	Screw, Mach, Hex Washer Hd, Slot #10-32 x 3/4
8	4	1907-005	Lockwasher, Split, #10 Med, SS
7	4	1909-026	WASHER, FLAT, SS, #10
6	1	2150-232	LABEL, TEMO CONTROL, HI/LO
5	1	3310-024	BAG, POLYETHYLENE, DUAL LOGO
4	1	3360-027	ENVELOPE, COIN, 24#
3	1	5901-011	NON-STICK COVER, 6 X 15
2	1	6110-040	KIT, WIRE HARNESS, SEAL PLATE
1	1	6305-086	Hot Plate Assembly, 6" X 15" 115V, 625A

Material List

- NOTES:  
 1. THIS ASSY FOR REPLACEMENT PARTS ONLY TEST PER: 6341-074  
 2. ITEMS NOT SHOWN: 3310-024, 3360-027, 2150-232, 6110-040

ALL DIMENSIONS IN INCHES EXCEPT WHERE NOTED		DWG BY: BRUCE		<b>HEAT SEAL/AMPAK</b> CLEVELAND, OHIO 44125	
STANDARD TOLERANCES EXCEPT WHERE NOTED (ALL PLUS/MINUS)		DATE: 10/31/2005			
2 PLC. DECIMAL: .010		CHK'D BY:		DESCRIPTION: <b>Hot Plate Assembly, 6 x 15 - 110V</b>	
3 PLC. DECIMAL: .005		DATE:			
FRACTION: 1/32		USED ON: Table Wrapper Series		SHEET: 1 OF 1	
ANGLE: 1'		SHEET SIZE: D		DRAWING NO. <b>6101-020</b>	
		DO NOT SCALE PRINT		REVISION: <b>7</b>	
		PART FILE NAME: C:\Vault Working Folder\Heat Seal Vault\Products\Super Market\6101\6101-020.iam			