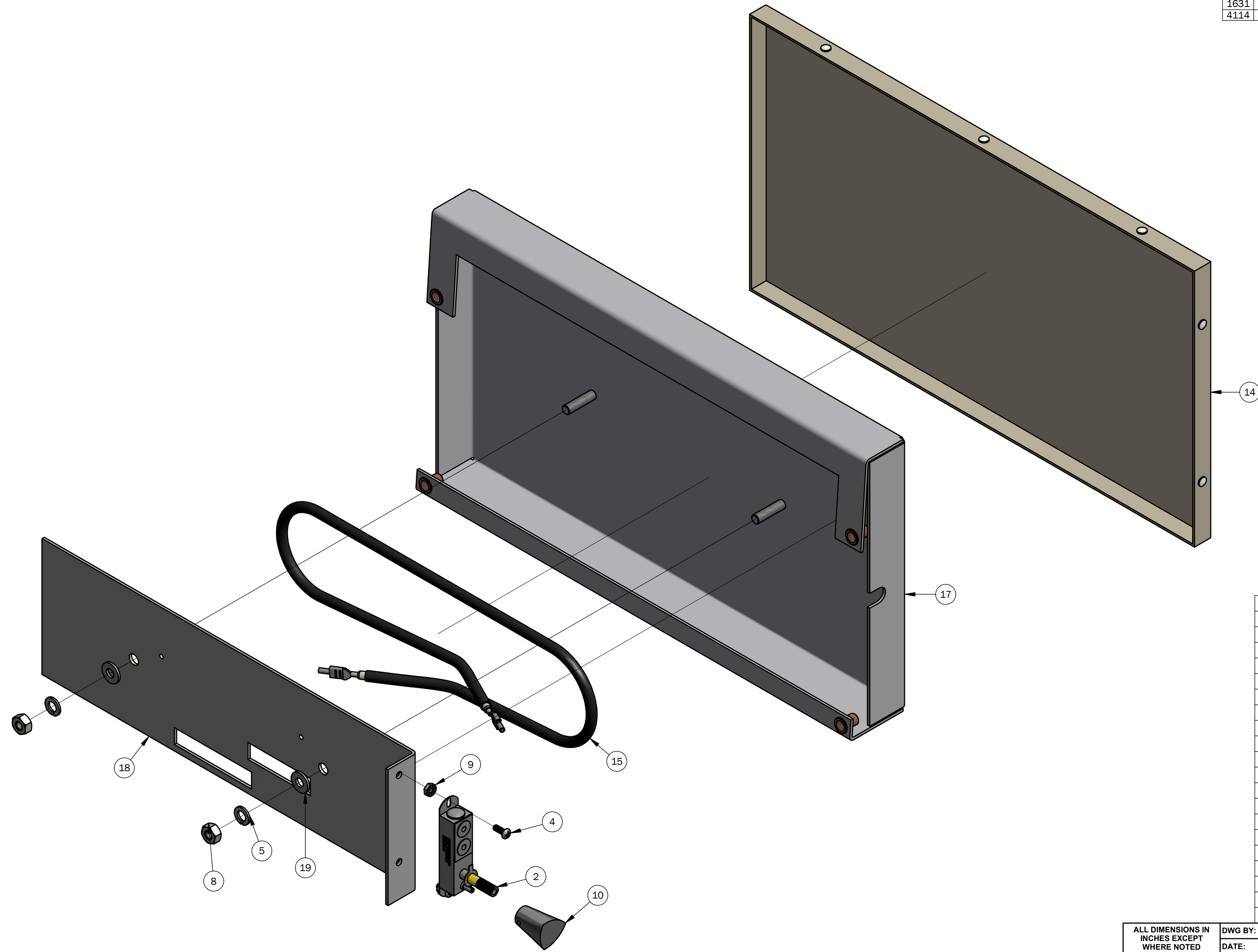


REVISION HISTORY				
ECN	REV	BY	DATE	DESCRIPTION
1631	1	DGW	4/19/2006	RELEASE & REDRAWN IN INVENTOR
4114	2	PG	7/29/2020	ADDED PRODUCTION NOTE FOR TESTING, ADDED 1909-004



ITEM	QTY	PART NO.	DESCRIPTION
19	2	1909-004	WASHER, FLAT, #12 SAE, SS, 1/4 ID X 9/16 OD
18	1	6305-080	PLATE, RETAINING, ELEMENT
17	1	6305-079	HOUSING, HOT PLATE, 8 X 15 (HS & M)
16	1	6110-040	KIT, WIRE HARNESS, SEAL PLATE
15	1	6110-016	115V ELEMENT ASSEMBLY
14	1	5901-001	Teflon Cover, 8 x 15
13	1	3360-027	ENVELOPE, COIN, 24#
12	1	3310-024	BAG, POLYETHYLENE, DUAL LOGO
11	1	2150-232	LABEL, TEMP CONTROL, HI/LO
10	1	2145-023	Knob, Thermostat, B200
9	2	1911-051	NUT, LOCK, K-TYPE, SS, 6-32
8	2	1911-010	NUT, HEX, 1/4-20 SS
7	1	1909-026	WASHER, FLAT, SS, #10
6	1	1907-005	LOCKWASHER, SPLIT, #10, SS
5	2	1907-001	LOCKWASHER, SPLIT, 1/4 MED, SS
4	2	1903-730	SCR, MACH, ROUND HD, PHIL, 6-32 X 3/8LG, SS
3	1	1903-188	SCR, MACH, HEX WASHER, 10-32 X 3/4
2	1	1881-002	B-200 Thermostat
1	1	1833-002	INSULATOR, WASHER, FIBER

ALL DIMENSIONS IN INCHES EXCEPT WHERE NOTED		DWG BY: WagnerD	HEAT SEAL/AMPAK CLEVELAND, OHIO 44125		
STANDARD TOLERANCES EXCEPT WHERE NOTED (ALL PLUS/MINUS)		DATE: 4/5/2006			
2 PLC. DECIMAL: .010		CHK'D BY:	DESCRIPTION: HOT PLATE ASSY, 8 X 15, 110V		
3 PLC. DECIMAL: .005		DATE:			
FRACTION: 1/32		USED ON: 107 KROGER	SHEET: 1 OF: 1	DRAWING NO. 6102-043	REVISION: 2
ANGLE: 1'		SHEET SIZE: D		PART FILE NAME: I:\CAD\HEATSEAL\PRODUCTS\Table and Floor Wrappers\6102\6102-043.iam	
		DO NOT SCALE PRINT			

REFERENCE PART NUMBERS			
6103-002			

FOR REPLACEMENT PARTS ONLY
TEST PER: 6341-074