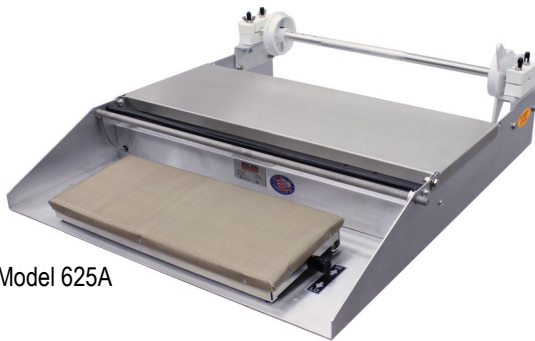




OPERATING & SERVICE PARTS MANUAL TABLE TOP OVERWRAPPERS



Model 625A



Model 600A



Model 825A

AXLE MOUNT MODELS:

MODEL 625A

SINGLE ROLL WITH MOUNTING AXLES

MODEL 625A MINI

COMPACT SINGLE ROLL WITH MOUNTING AXLES

MODEL 825A

DUAL ROLL WITH MOUNTING AXLES

MODEL 875A

TRIPLE ROLL WITH MOUNTING AXLES

FILM ROLLER MODELS:

MODEL 600A

SINGLE ROLL WITH ROLLERS

MODEL 500A

COMPACT SINGLE ROLL WITH ROLLERS

MODEL 500A MINI

COMPACT SINGLE ROLL WITH ROLLERS

MODEL 800A

DUAL ROLL WITH ROLLERS

MODEL 850A

TRIPLE ROLL WITH ROLLERS

READ ALL INSTRUCTIONS CAREFULLY BEFORE OPERATING EQUIPMENT

TABLE OF CONTENTS



Film Threading.....	3
Installing the Film Axle.....	4
Recommended Maintenance	5
625A Schematic & Parts List	6
625A Mini Schematic & Parts List	7
825/875A Schematic & Parts List	8
600A Schematic & Parts List	9
800/850A Schematic & Parts List	10
Troubleshooting Guide	13
Electrical Service Information	14
Electrical Schematics.....	15
Electrical Box & Hot Plate Schematic & Parts List	16

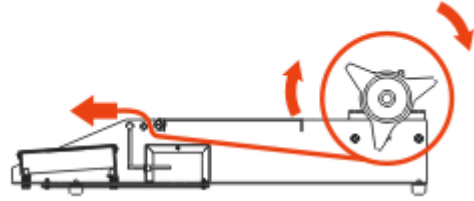
FILM THREADING



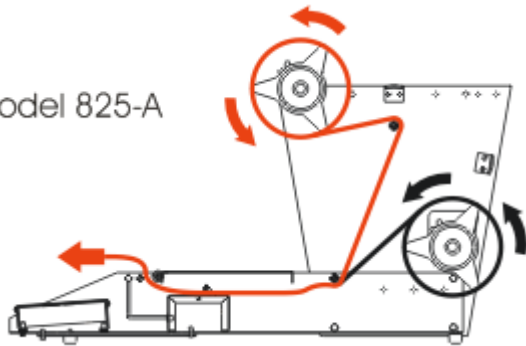
FOR AXLE TYPE WRAPPERS (625, 825, 875):

See instructions on next pages to load the film onto the axle.
Thread the film as shown, one at a time or as needed.

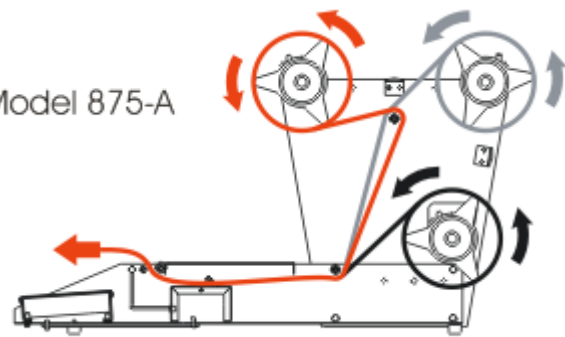
Model 625-A



Model 825-A



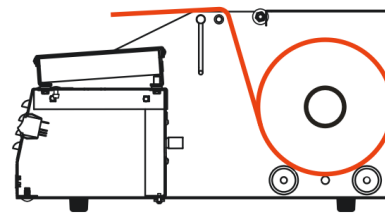
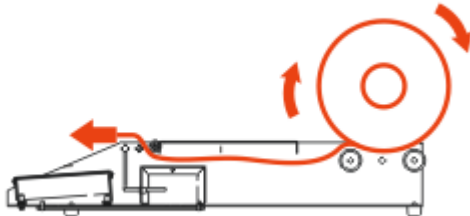
Model 875-A



FOR ROLLER TYPE WRAPPERS (600, 800, 850):

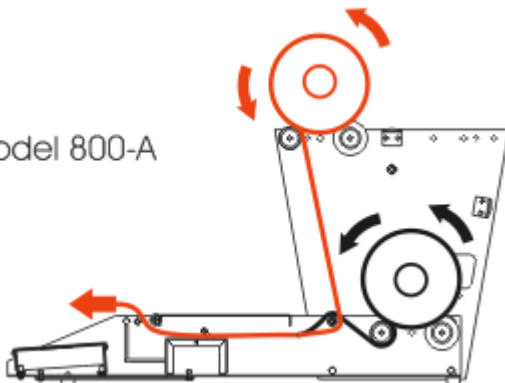
Rest film Roll on top of two rollers, centering film between the film guides. Tighten the thumbscrew against the film brake to ensure proper film tension. Thread the film as shown, threading one at a time or as needed.

Model 600-A

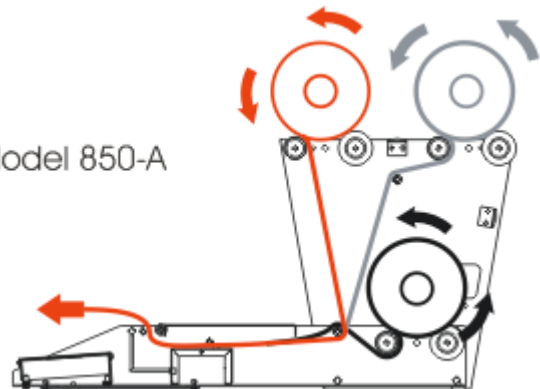


Model 500-A

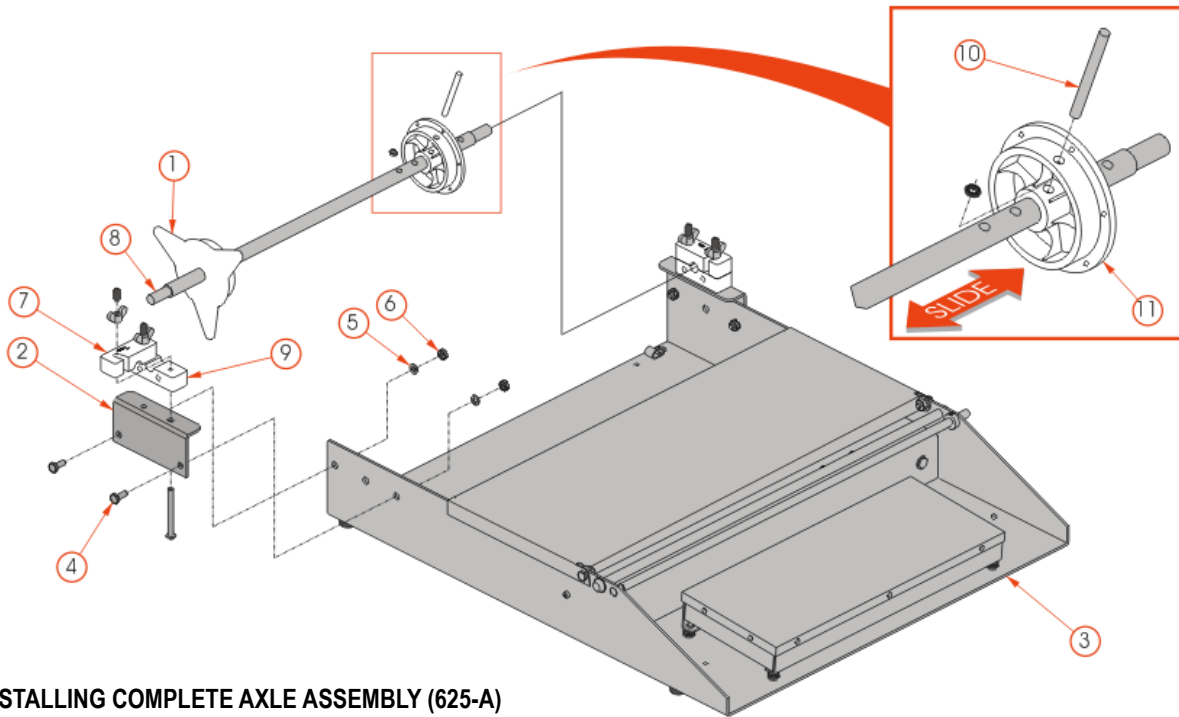
Model 800-A



Model 850-A



INSTALLING & ADJUSTING THE FILM AXLE



INSTALLING COMPLETE AXLE ASSEMBLY (625-A)

- Position the complete axle assembly on the rear of the wrapper with the removable end cap (1) on the left side and the bearing blocks (2) on the outside of the sides of the machine base (3) as shown in the drawing.
- Fasten the bearing blocks to the sides of the machine base with the four bolts (4), lock washers (5) and hex nuts (6) provided in the bearing block set.

INSTALLING COMPLETE AXLE ASSEMBLY (825-A/875-A)

- Position the complete axle assemblies between the side plates of the wrapper with the removable end cap on the left side and the bearing blocks and mounting brackets on the inside of the plates.
- Fasten bearing blocks, mounting bracket and axle to the side plates with the fasteners provided in the bearing block set

REMOVING THE AXLE

- Remove the protective caps from the ends of both bolts located in the slotted holes of the upper bearing blocks (7).
- Remove the wing nuts on both bolts with the protective caps removed and loosen the wing nuts on both bolts located in the other holes of the upper bearing blocks.
- Swing the upper bearing blocks toward the outside of the machine base until the ends of the axle (8) are exposed.
- Lift the axle out of the lower bearing blocks (9).

INSTALLING THE AXLE

- Place the ends of axle into the grooves on lower bearing blocks with the removable end cap positioned on the left side as shown in the illustration.
- Swing the upper bearing blocks toward the inside of the machine base until they align with the lower bearing blocks.
- Thread the wing nuts onto both of the bolts located in the slotted holes of the upper bearing blocks and tighten all of the wing nuts on all four of the bolts in the bearing block assemblies.
- Replace the protective caps on the ends of both bolts located in the slotted holes of the upper bearing blocks.

CHANGING THE AXLE END CAP WIDTH

- Pull pin (10) out of the outer flange of hub (11) until the end of pin clears the inner flange of hub. Do not completely remove the pin from the hub.
- Slide the hub to the new position and align the hole on the inner flange on hub with the nearest hole in the axle.
- Push the pin completely through the inner flange of hub and the axle until the top of the pin is flush with the outer flange of hub.

RECOMMENDED MAINTENANCE



- **MAKE SURE TO TURN OFF THE UNIT, PULL THE PLUG AND LET THE MACHINE COOL DOWN BEFORE CLEANING ***

NON-STICK COVER & HOT PLATE

- It is recommended to replace the Non-stick cover at least once every three months to protect the heating foil and maintain a sanitary surface. The Non-stick cover is used to create a sanitary, stick free surface to seal film with the hot plate. Non-stick covers are porous, meaning liquids or moisture can permeate the cover, get to the surface of the hot plate, and burn off on the hot plate.
- It's recommended that the Non-stick cover be replaced every three (3) months or as needed depending on the level of daily wear and tear. The Non-stick cover should be changed if the surface is soiled, or holes, punctures, excessive wear, or damage are present.
- The hot plate can be cleaned, as needed, with a mild spray degreaser, applied to a soft rag or paper towel and then wiped on the plate while cold.

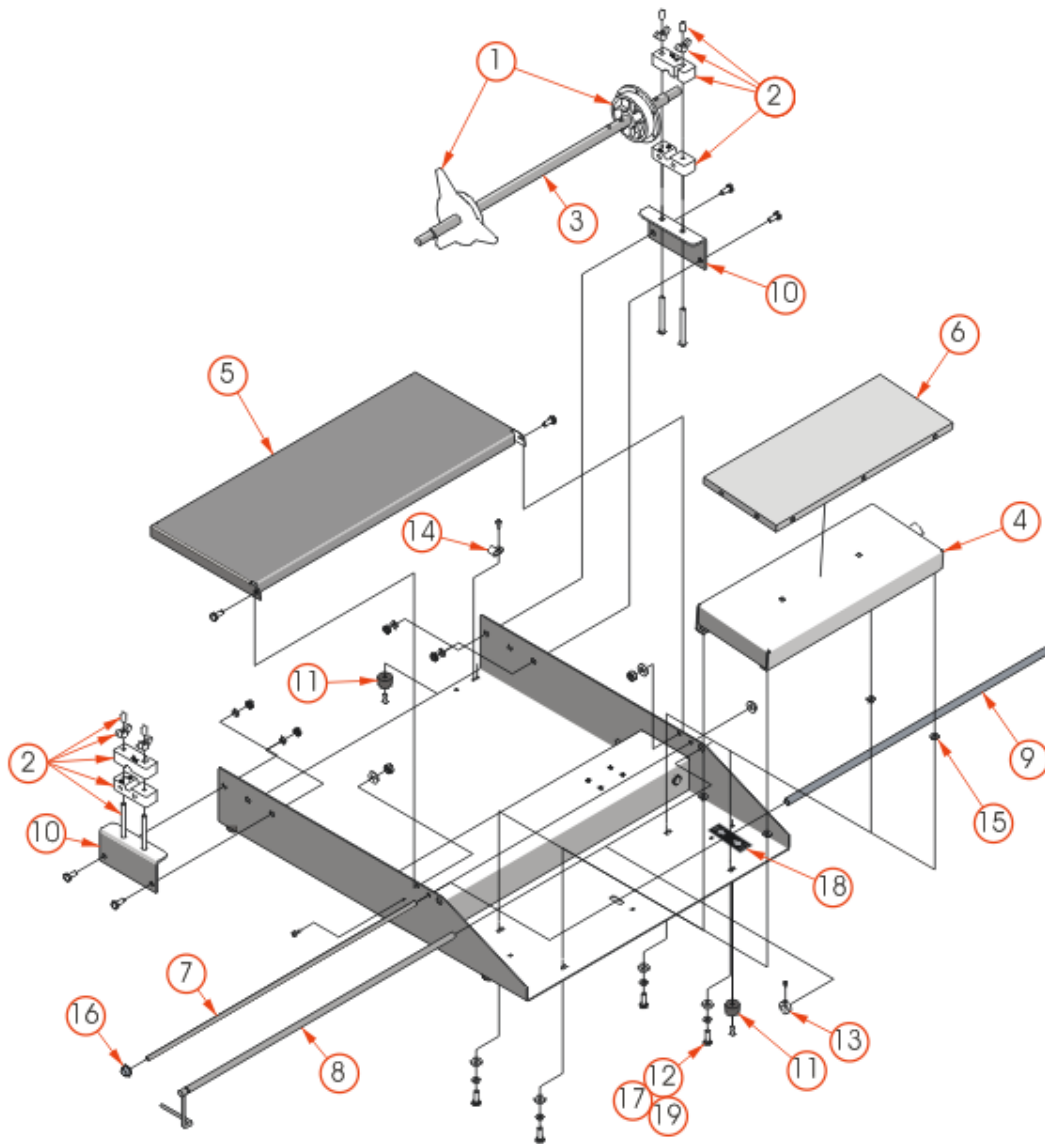
CUT OFF ROD

- Make sure that the unit is turned off and the cut off rod is cold to the touch.
- The film cut off rod can be cleaned, as needed. Cover the unit surfaces with paper towels to protect them from over spray and debris.
- Spray and coat the Cut-off Rod generously with an FDA approved "Degreaser" product.
- After soaking for a few minutes, lightly scrub the surface of the Cut-off rod with a Scour Pad (Scotch-Brite™ type pad).
- Wipe the surface clean of debris and residue with clean paper towels or cloths.

CLEANING THE UNIT

- The machine can be completely wiped down using mild cleaning detergent and soft rags or paper towels. Do not hose down or submerge the unit.

MODEL 625A REPLACEMENT PARTS

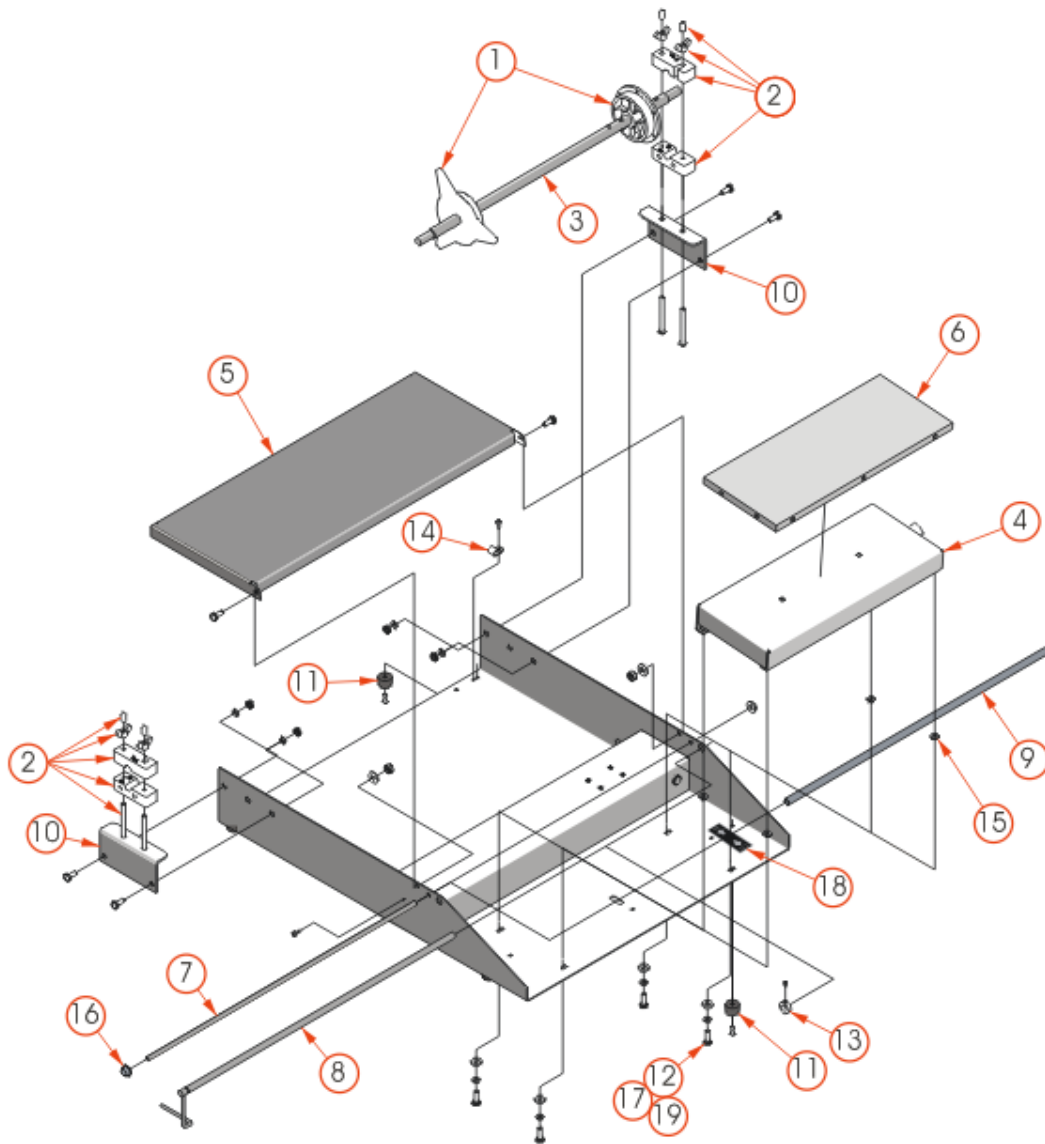


ITEM	PART #	DESCRIPTION
1	6110-023	Film Core Adapter Set
2	6305-018	Bearing Block Set
3	3005-004	Film Core Axle, 21 15/16" L
4	6101-020	Hot Plate Assy, 6 by 15
	6102-043	Hot Plate Assy, 8 by 15
5	6102-052	Wrapping Bridge
6	5901-011	Non-stick Cover, 6 by 15
	5901-001	Non-stick Cover, 8 by 15
7	6301-019	Film Retainer Rod
8	1824-011	Cut-Off Rod, 23" L
9	6301-018	Vinyl Film Retainer

ITEM	PART #	DESCRIPTION
10	6305-048	Bearing Block Support Bracket
11	2135-001	Large Rubber Foot
12	1903-188	Hex Head Cap Screw
13	3005-010	Cut-Off Rod Collar
14	1927-008	Vinyl Clamp
15	1833-002	Fiber Insulator Washer
16	1958-001	Metal Shaft Retainer
17	1907-005	Lock Washer
18	2150-232	Hi-Lo Decal
19	1909-019	No. 10 Flat Washer

Revised 2018

MODEL 625A MINI REPLACEMENT PARTS



ITEM	PART #	DESCRIPTION
1	6110-023	Film Core Adapter Set
2	6305-018	Bearing Block Set
3	3005-006	Film Core Axle, 16 7/8" L
4	6305-011	Hot Plate Assy, 6 by 9
5	6305-050	Wrapping Bridge
6	5901-014	Non-stick Cover, 6 by 9
7	6305-049	Film Retainer Rod
8	1824-010	Cut-Off Rod, 15 1/2" L
9	6305-120	Vinyl Film Retainer

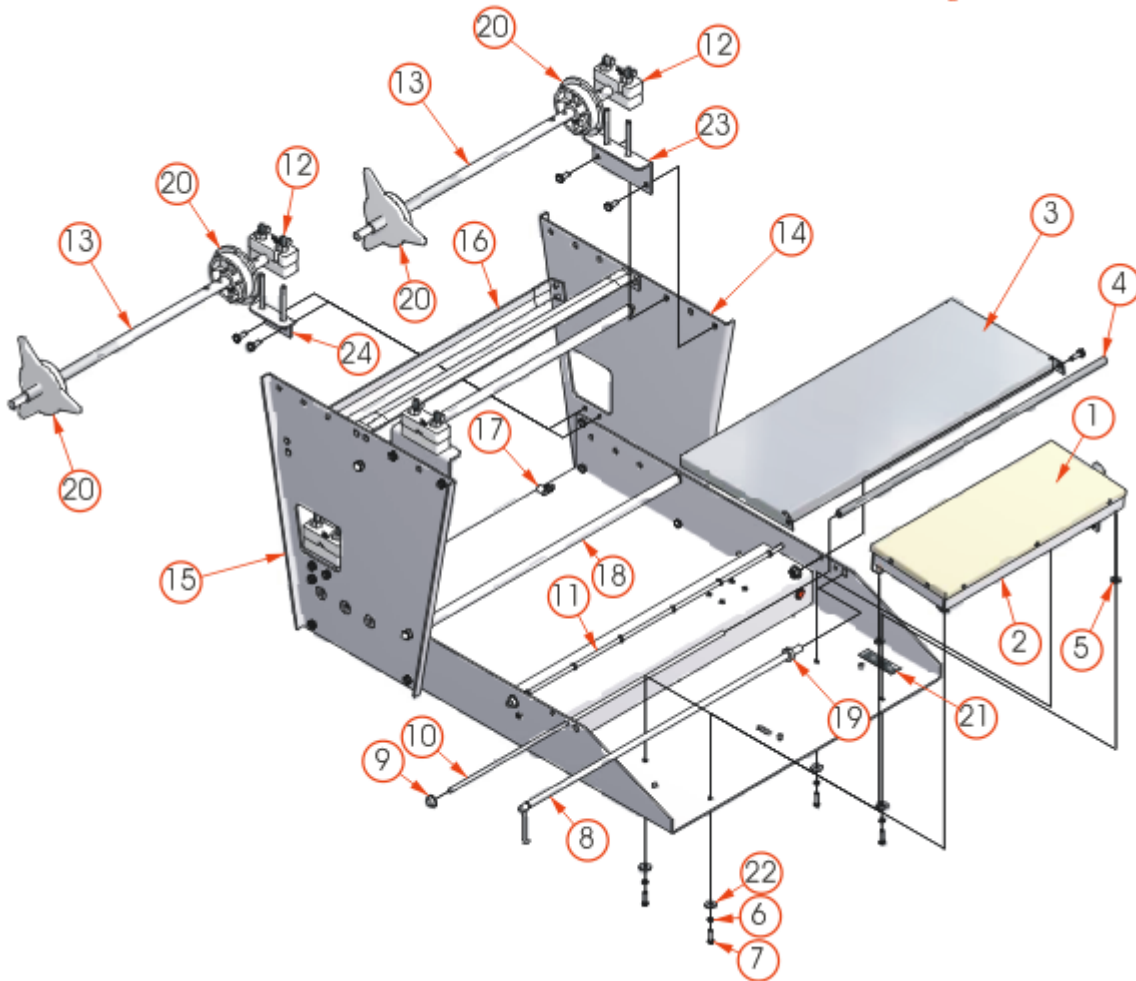
ITEM	PART #	DESCRIPTION
10	6305-048	Bearing Block Support Bracket
11	2135-001	Large Rubber Foot
12	1903-188	Hex Head Cap Screw
13	3005-010	Cut-Off Rod Collar
14	1927-008	Vinyl Clamp
15	1833-002	Fiber Insulator Washer
16	1958-001	Metal Shaft Retainer
17	1907-005	Lock Washer
18	2150-232	Hi-Lo Decal
19	1909-019	No. 10 Flat Washer

Revised 2018

MODEL 825A/875A REPLACEMENT PARTS



*825-A: Two Mounting Axles (As Shown)
875-A: Three Mounting Axles

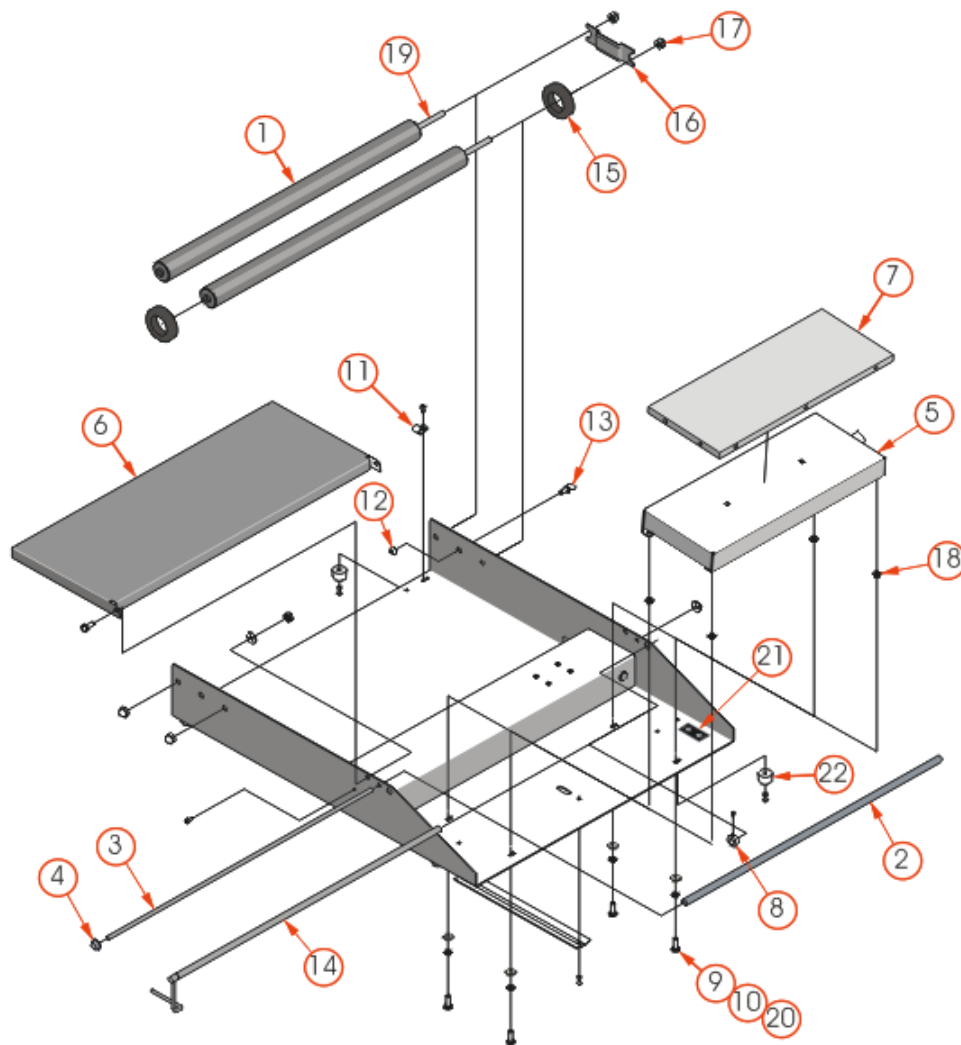


ITEM	PART #	DESCRIPTION
1	5901-011	Non-stick Cover, 6 by 15
	5901-001	Non-stick Cover, 8 by 15
2	6101-020	Hot Plate Assy, 6 by 15
	6102-043	Hot Plate Assy, 8 by 15
3	6102-052	Wrapping Bridge
4	6301-018	Film Guide Tube
5	1833-002	Fiber Insulator Washer
6	1907-005	Lock Washer
7	1903-188	Hex Head Cap Screw
8	1824-011	Cut-Off Hot Rod, 23" L
9	1958-001	Shaft Retainer
10	6310-043	Film Guide Shaft 22 3/4" L
11	6301-035	Film Guide Shaft 22 3/4" L

ITEM	PART #	DESCRIPTION
12	6305-018	Bearing Block Set
13	3005-004	Film Core Axle, 21 15/16" L
14	6310-046	Right Hand Side Plate
15	6310-047	Left Hand Side Plate
16	6310-041	Support Bracket
17	1927-008	Vinyl Clamp
18	6301-037	Film Separator Roller
19	3005-010	Cut-Off Rod Collar
20	6110-023	Film Core Adapter Kit
21	2150-232	Hi-Lo Decal
22	1909-019	No. 10 Flat Washer
23	6305-048	Bearing Block Support Bracket
24	6310-045	Bearing Block Support Bracket

Revised 2018

MODEL 600A REPLACEMENT PARTS

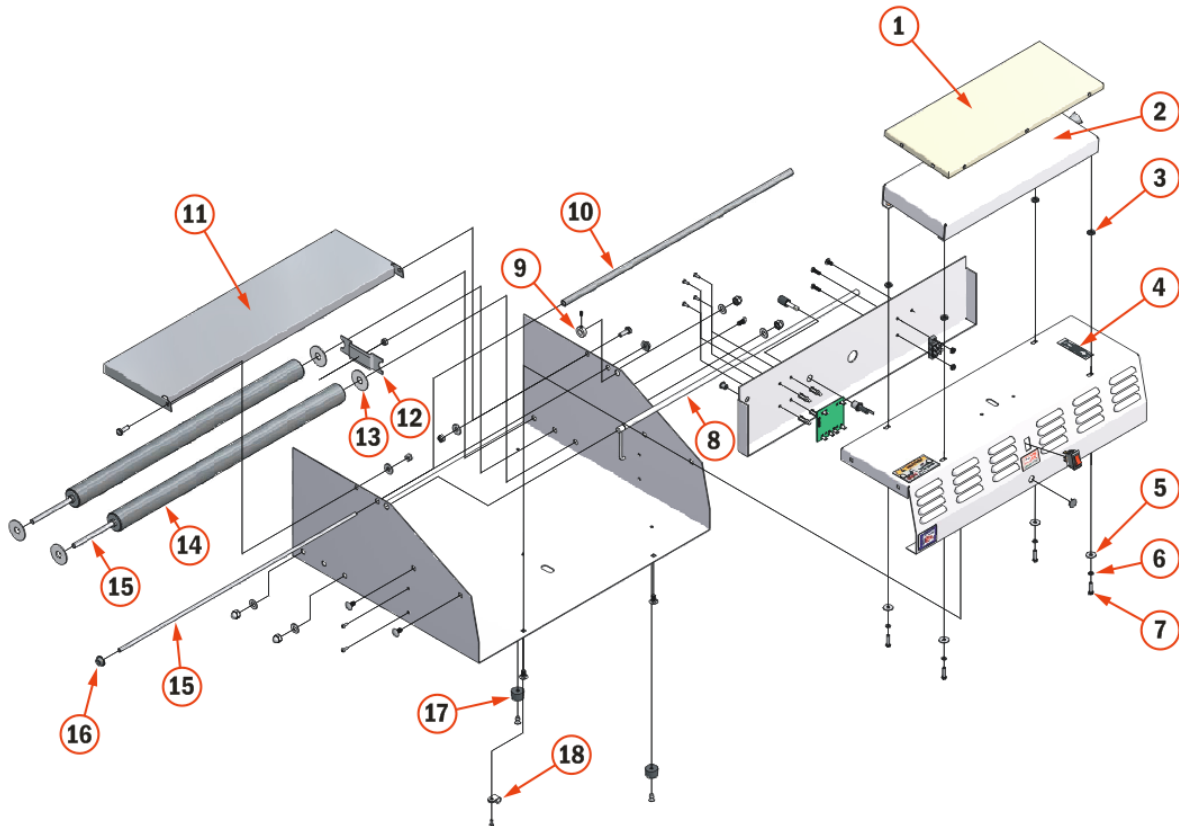


ITEM	PART #	DESCRIPTION
1	6301-017	Film Roller Assembly
2	6301-018	Vinyl Film Retainer
3	6301-019	Film Retainer Rod
4	1958-001	Metal Shaft Retainer
5	6101-020	Hot Plate Assy, 6 By 15
	6102-043	Hot Plate Assy, 8 By 15
6	6102-052	Wrapping Bridge
7	5901-011	Non-stick Cover, 6 By 15
	5901-001	Non-stick Cover, 8 By 15
8	3005-010	Cut-off Rod Collar
9	1903-188	Hex Head Cap Screw
10	1907-005	Lock Washer

ITEM	PART #	DESCRIPTION
11	1927-008	Vinyl Wire Clamp
12	1911-038	Clinch Nut
13	1923-002	Thumb Screw
14	1824-011	Cut-off Rod, 23" L
15	3010-021	Film Retainer/Guide, 1 3/8 Dia.
16	6301-020	Film Roller Brake
17	1911-001	Acorn Nut
18	1833-002	Fiber Insulator Washer
19	3005-036	Film Roller Shaft
20	1909-019	No. 10 Flat Washer
21	2150-232	Hi-Lo Decal
22	2135-001	Large Rubber Feet

Revised 2018

MODEL 500A REPLACEMENT PARTS

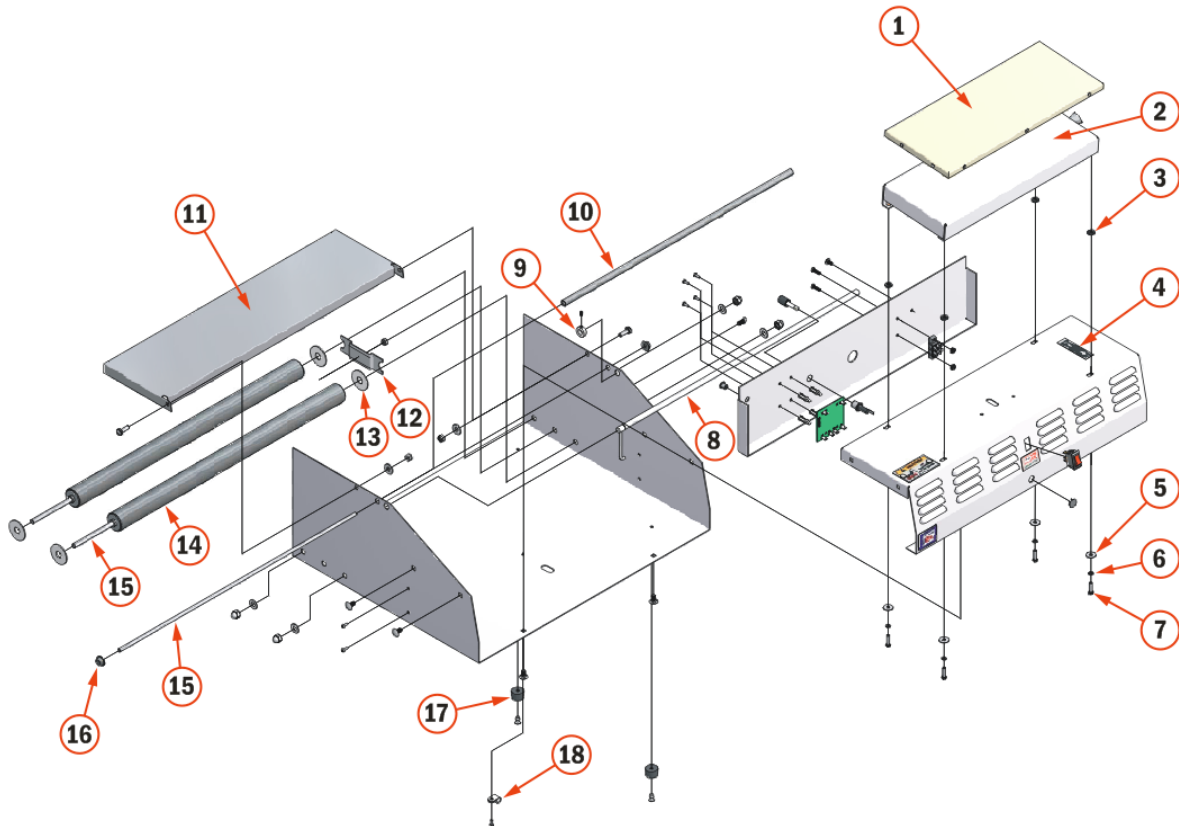


ITEM	PART #	DESCRIPTION
1	5901-011	Non-stick Cover, 6 By 15
2	6101-020	Hot Plate Assy, 6 By 15
3	1833-002	Fiber Insulator Washer
4	2150-232	Hot Plate Temp Control Decal
5	1909-019	No. 10 Flat Washer
6	1907-005	Lock Washer
7	1903-188	Hex Head Cap Screw
8	1824-011	Cut-off Rod, 23" L
9	3005-010	Cut-off Rod Collar

ITEM	PART #	DESCRIPTION
10	6301-018	Vinyl Film Retainer
11	6102-052	Wrapping Bridge
12	6301-020	Film Roller Brake
13	1909-003	Fender Washer
14	6301-017	Film Roller Assembly
15	3005-036	Film Roller Shaft ***
16	1958-001	Metal Shaft Retainer
17	2135-001	Large Rubber Feet
18	1927-008	Vinyl Wire Clamp

Revised 2018

MODEL 500A MINI REPLACEMENT PARTS

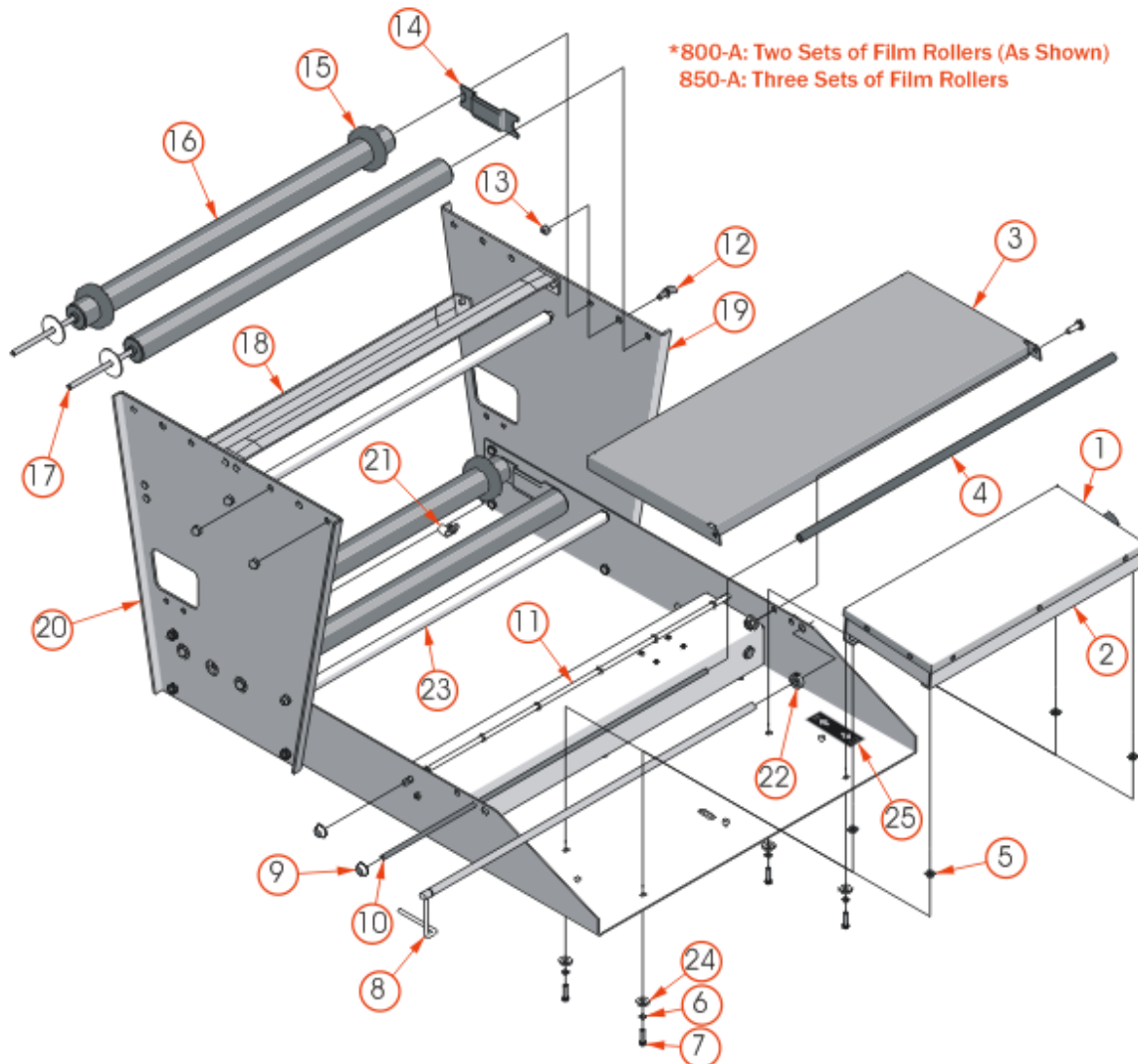


ITEM	PART #	DESCRIPTION
1	5901-014	Non-stick Cover, 6 By 9
2	6305-132	Hot Plate Assy, 6 By 9
3	1833-002	Fiber Insulator Washer
4	2150-232	Hot Plate Temp Control Decal
5	1909-019	No. 10 Flat Washer
6	1907-005	Lock Washer
7	1903-188	Hex Head Cap Screw
8	1824-010	Cut-Off Rod, 15 1/2" L
9	3005-010	Cut-off Rod Collar

ITEM	PART #	DESCRIPTION
10	6305-120	Vinyl Film Retainer
11	6305-065	Wrapping Bridge
12	6301-020	Film Roller Brake
13	1909-003	Fender Washer
14	6305-122	Film Roller Assembly
15	6305-121	Film Roller Shaft
16	1958-001	Metal Shaft Retainer
17	2135-001	Large Rubber Feet
18	1927-008	Vinyl Wire Clamp

Revised 2018

MODEL 800A/850A REPLACEMENT PARTS



ITEM	PART #	DESCRIPTION
1	5901-011	Non-stick Cover, 6 by 15
	5901-001	Non-stick Cover, 8 by 15
2	6101-020	Hot Plate Assy, 6 by 15
	6102-043	Hot Plate Assy, 8 by 15
3	6102-052	Wrapping Bridge
4	6301-018	Film Guide Tube
5	1833-002	Fiber Insulator Washer
6	1907-005	Lock Washer
7	1903-188	Hex Head Cap Screw
8	1824-011	Cut-Off Hot Rod 23" L
9	1958-001	Metal Shaft Retainer
10	6310-043	Film Guide Shaft, 22 3/4"
11	6301-035	Film Guide Shaft, 22 3/4"
12	1923-002	Thumb Screw

ITEM	PART #	DESCRIPTION
13	1911-038	Clinch Nut
14	6301-020	Film Tension Brake
15	3010-021	Film Retainer
16	6301-017	Film Roller Assembly
17	3005-036	Film Roller Shaft
18	6310-041	Support Bracket
19	6310-046	Right Hand Side Plate
20	6310-047	Left Hand Side Plate
21	1927-008	Vinyl Clamp
22	3005-010	Cut-Off Rod Collar
23	6301-037	Film Separator Roller
24	1909-019	#10 Flat Washer
25	2150-232	Hi-Lo Decal

Revised 2018

GENERAL QUESTIONS

If new machine doesn't turn on (heat up) what should we do?	Ensure power switch is ON. Check if fuse is blown. Check for loose wires in the electrical box, shipping may loosen wire connections.
My unit is tripping the GFCI?	The wires in the hot plate may be shorting and should be insulated with a high temperature electrical tape. If the thermostat is shorting to ground, replace the
What is the standard voltage on wrapping machines?	110V - (220V is available)
Does the Heating Element 6110-016 fit all hot plates?	The element fits the 6 by 15, 8 by 15 and 9 by 12 hot plates. The 6 by 9 hot plate uses 6504-022 element.
My timer will not set for short amounts of time?	You must turn knob on the timer past 2 and set back to desired time.
How do I change my Non-stick cover?	When unit is cool, pull cover off it is not attached.
Where can I get transformers?	They are no longer available. You need a hot rod conversion kit.
What kind of film do I use?	PVC stretch film for wrapping meat and produce, its chemical characteristics provide barriers to protect the product. Stretch film for pallet wrap is Polyethylene and not to be used on wrappers.

ABOUT HOT ROD

My hot rod is cold, what should I do?	a) Check the fuse, replace if blown. b) Check the circuit board for loose wires. c) See page 2 for testing the Hot Rod Circuit Board.
My hot rod is not hot enough or too hot, what should I do?	a) Check the circuit board, if potentiometer has been adjusted the rod will no longer work correctly. b) See page 2 for testing the Hot Rod Circuit Board.
My hot plate works but my hot rod doesn't?	a) Hot Rod, Circuit Board and Fuse Holder work together. b) Hot Plate, Thermostat and Element work together. c) Hot Plate and Hot Rod are independent of each other.

ABOUT HOT PLATE

Why is the Hot Plate smoking?	That is excess protective coating on the heating element burning off and should last no more than 10 or 15 minutes.
My hot plate is cold?	Check element then thermostat and wires to thermostat.

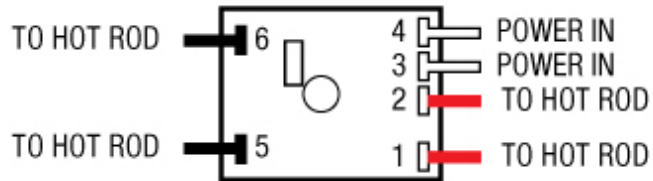
****WHEN REPLACING THE HOT ROD OR CIRCUIT BOARD,
IT IS RECOMMENDED TO REPLACE BOTH SINCE THEY WORK TOGETHER.****

ELECTRICAL SERVICE INFORMATION



ELECTRICAL REQUIREMENTS

All Models are 110 Volts, 10 Amps.



HOT ROD CIRCUIT BOARD TEST

A standard 115 volt neon circuit tester can be used for these tests.

CHECKING FUSES

Remove the fuse from their housing units located on the front of the electrical box. If a visual inspection does not verify a blown fuse check for continuity by using the meter to read across the two terminals of the fuse.

If the meter reading does not show continuity, replace the fuse.

CHECKING THE HOT ROD

With the power turned OFF, remove the red hot rod wires from Terminals 1 and 2. Using the meter, measure the resistance of the rod by connecting the leads of the meter to the red wires.

The meter should read between 130-136 ohms. If the reading is out of this range, replace the hot rod.

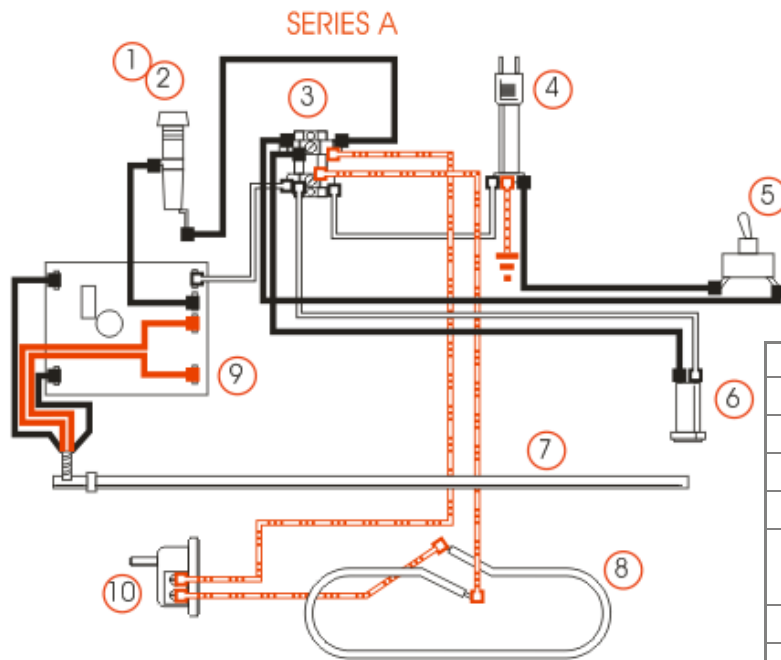
CHECKING THE CIRCUIT BOARD

After the hot rod and both the fuses have passed the above testing procedures, the circuit board can be tested.

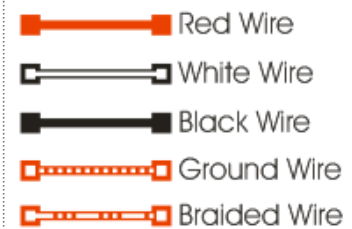
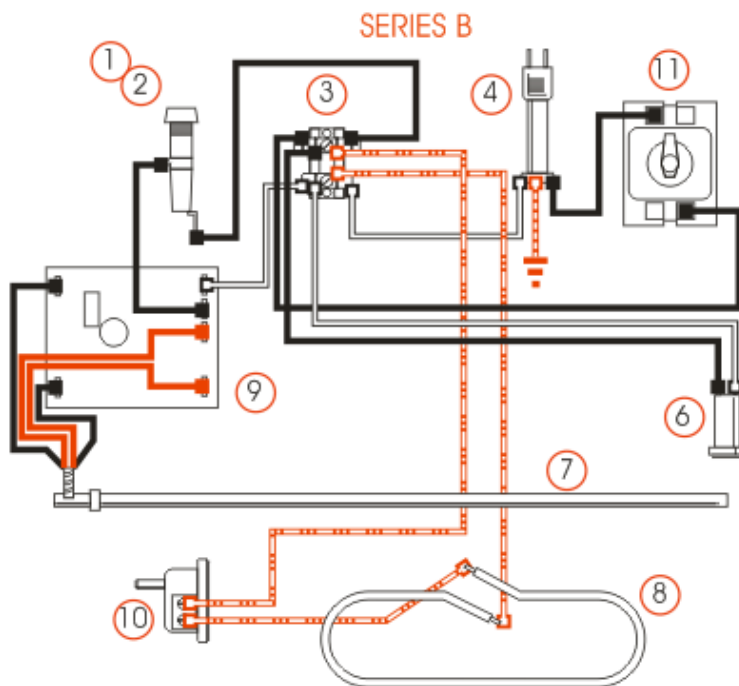
With all the wires shown in the example circuit board (above) properly connected and the power ON, use the meter to test the voltage across Terminals 1 and 2. If there is no voltage being read, the board needs to be replaced.

THIS UNIT SHOULD NOT BE OPERATED IF ROD TEMPERATURE EXCEEDS 300 DEGREES FAHRENHEIT. IF SMOKE OR FUMES ARE DETECTED, DISCONTINUE USE

ELECTRICAL DIAGRAMS

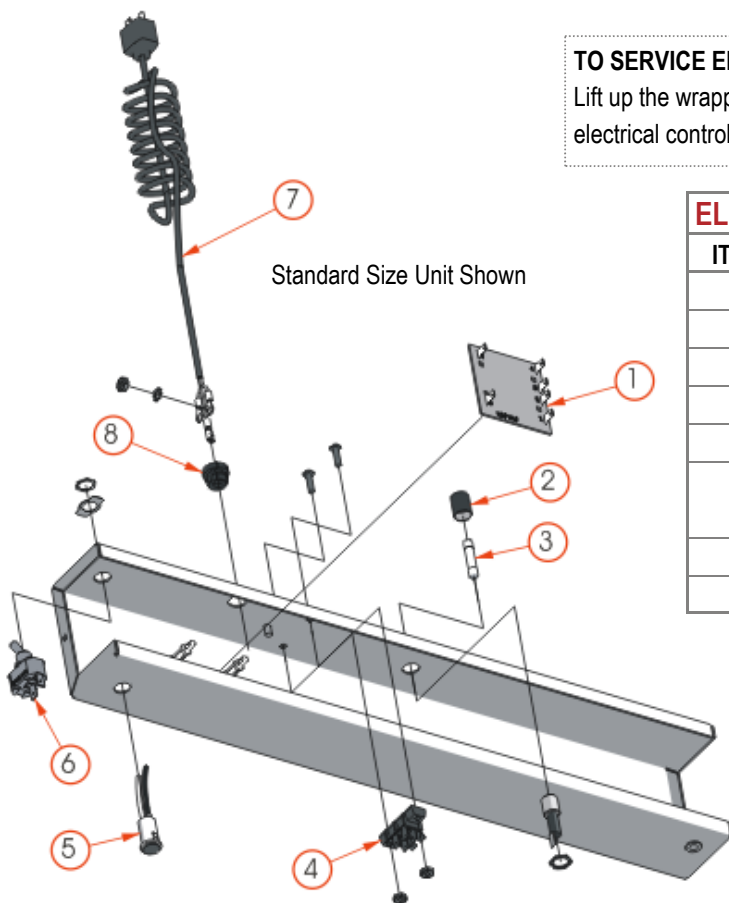


ITEM	PART #	DESCRIPTION
1	6108-003	Fuse Holder
2	1821-034	Fuse
3	1875-002	Terminal Block
4	1851-052	Power Cord
5	1872-008	Toggle Switch (Series A)
	1872-009	Rocker Switch for 500 Series
6	6108-002	Pilot Light
7	1824-011	Cut-Off Hot Rod, 23" L
8	6110-016	Element
9	1818-001	Circuit Board
10	1881-002	Thermostat
11	1884-023	Timer (Series B)



Revised 2018

ELECTRICAL BOX & HOT PLATE PARTS



TO SERVICE ELECTRICAL PARTS ON ELECTRICAL BOX:

Lift up the wrapping bridge, then remove the screws holding the electrical control housing to the base. Lift out and replace parts.

ELECTRICAL BOX REPLACEMENT PARTS

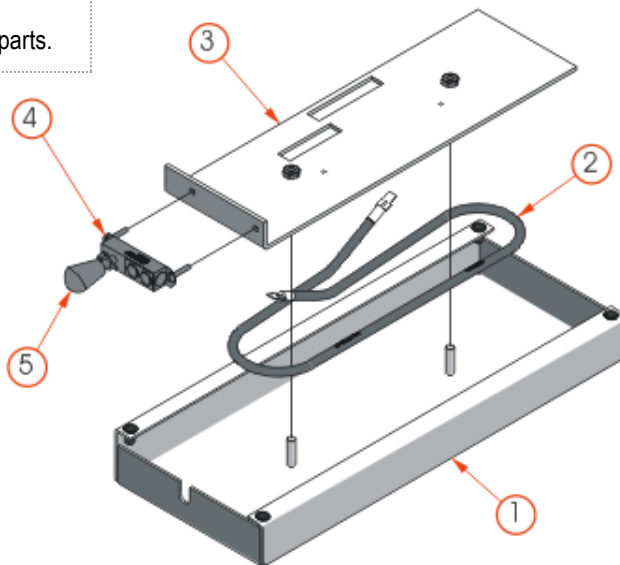
ITEM	PART #	DESCRIPTION
1	1818-001	Circuit Board
2	6108-003	Fuse Holder
3	1821-034	Fuse, 1 A MDA Slo-Blo
4	1875-002	Terminal Block
5	6108-000	Pilot Light, Red
6	1872-008	Toggle Switch
	1872-009	Rocker Switch (500 Series)
7	1851-052	Power Cord, 5 Ft.
8	1869-003	Strain Relief

TO SERVICE ELECTRICAL PARTS ON HOT PLATE:

Remove from wrapper base and replace worn or defective parts.

HOT PLATE REPLACEMENT PARTS

ITEM	PART #	DESCRIPTION
1	6305-076	Hot Plate, 6 by 15
	6305-079	Hot Plate, 8 by 15
2	6110-016	Element
3	6305-080	Element Support Plate
4	1881-002	B-200 Thermostat
5	2145-023	Knob



Revised 2018

